

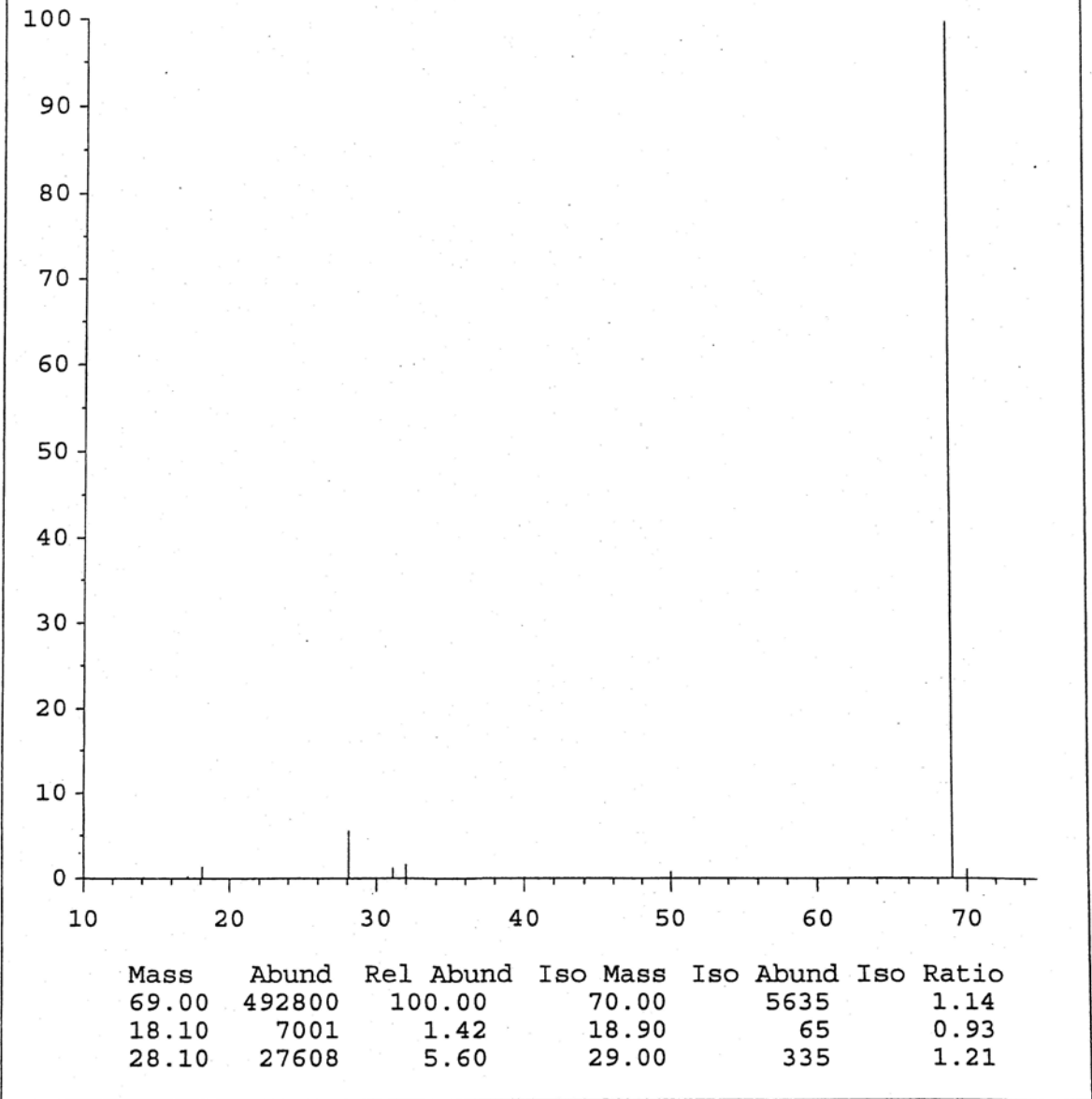
5973 Air and Water Check

Instrument: MSD 20

Mon Jul 24 11:16:34 2006

D:\MSDCHEM\1\5973N\ATUNE.U

Scan: 10.00 - 75.00 Samples: 8 Thresh: 0 Step: 0.10  
 65 peaks Base: 69.00 Abundance: 492800



Current Params used:

Rep = 29.8 Entl = 19.33 Entr = 12 FOCUS = 90 EMV = 1353

Relative abundances:

18/69 = 1.42	Water%
28/69 = 5.60	Nitrogen%
32/69 = 1.69	Oxygen%
44/69 = 0.13	Carbon Dioxide%
28/18 = 394.34	Nitrogen/Water%